

Deaths during or following police contact: Statistics for England and Wales

**Time series tables
2004/05 to 2024/25**

List of tables

Road traffic incidents

Table 1.1 Number of fatalities and incidents by financial year, 2004/05 to 2024/25

Table 1.2 Type of road traffic incident, 2004/05 to 2024/25

Table 1.3 Type of road traffic fatality, 2004/05 to 2024/25

Table 1.4 Gender by financial year, 2004/05 to 2024/25

Table 1.5 Age group by financial year, 2004/05 to 2024/25

Table 1.6 Ethnicity by financial year, 2004/05 to 2024/25

Road traffic incidents by force

Table 1.7 Number of INCIDENTS by appropriate authority and financial year, 2004/05 to 2024/25

Table 1.8 Number of FATALITIES by appropriate authority and financial year, 2004/05 to 2024/25

Fatal shootings

Table 2.1 Number of fatalities and incidents by financial year, 2004/05 to 2024/25

Table 2.2 Gender by financial year, 2004/05 to 2024/25

Table 2.3 Age group by financial year, 2004/05 to 2024/25

Table 2.4 Ethnicity by financial year, 2004/05 to 2024/25

Fatal shootings by force

Table 2.5 Number of FATALITIES by force and financial year, 2004/05 to 2024/25

Deaths in or following police custody

Table 3.1 Number of fatalities and incidents by financial year, 2004/05 to 2024/25

Table 3.2 Gender by financial year, 2004/05 to 2024/25

Table 3.3 Age group by financial year, 2004/05 to 2024/25

Table 3.4 Ethnicity by financial year, 2004/05 to 2024/25

Deaths in or following police custody by appropriate authority

Table 3.5 Number of FATALITIES by appropriate authority and financial year, 2004/05 to 2024/25

Apparent suicides following police custody

Table 4.1 Number of fatalities and incidents by financial year, 2004/05 to 2024/25

Table 4.2 Gender by financial year, 2004/05 to 2024/25

Table 4.3 Age group by financial year, 2004/05 to 2024/25

Table 4.4 Ethnicity by financial year, 2004/05 to 2024/25

Apparent suicides following police custody by appropriate authority

Table 4.5 Number of FATALITIES by appropriate authority and financial year, 2004/05 to 2024/25

Other deaths following police contact

Table 5.1 Number of fatalities and incidents by financial year, 2004/05 to 2024/25

Table 5.2 Gender by financial year, 2004/05 to 2024/25

Table 5.3 Age group by financial year, 2004/05 to 2024/25

Table 5.4 Ethnicity by financial year, 2004/05 to 2024/25

Other deaths following police contact by appropriate authority

Table 5.5 Number of INCIDENTS by appropriate authority and financial year, 2004/05 to 2024/25

Table 5.6 Number of FATALITIES by appropriate authority and financial year, 2004/05 to 2024/25

Road traffic incidents - fatalities

Definition:

This **includes** deaths of motorists, cyclists or pedestrians arising from police pursuits, police vehicles responding to emergency calls and other police traffic-related
It **does not** include deaths following a road traffic incident (RTI) where the police have attended immediately after the event as an emergency service.

Notes:

- In 2011 the ACPO guidance on police pursuits was issued as a statutory code of practice.

Table 1.1 Number of fatalities and incidents by financial year, 2004/05 to 2024/25

Financial year	Number of fatalities	Number of incidents
2004/05	44	43
2005/06	48	42
2006/07	36	35
2007/08	24	18
2008/09	40	33
2009/10	29	26
2010/11	26	24
2011/12	19	19
2012/13	31	23
2013/14	12	11
2014/15	14	13
2015/16	21	20
2016/17	32	28
2017/18	29	27
2018/19	42	33
2019/20	24	24
2020/21	25	20
2021/22	40	33
2022/23	28	26
2023/24	32	29
2024/25	26	25
Total	622	552

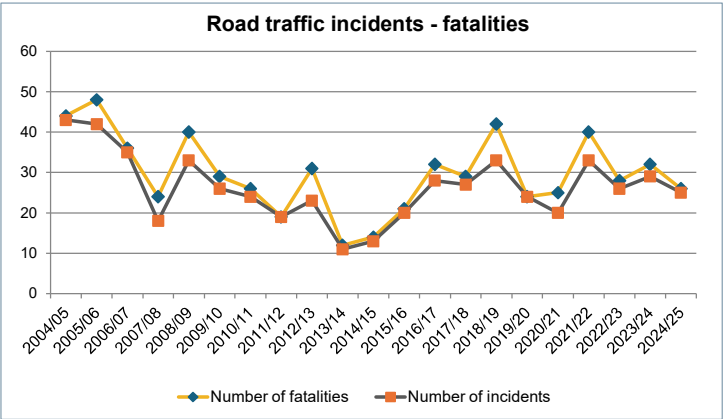


Table 1.2 Type of road traffic incident, 2004/05 to 2024/25

RTI type	Incidents																					Total incidents
	04/05	05/06	06/07	07/08	08/09	09/10	10/11	11/12	12/13	13/14	14/15	15/16	16/17	17/18	18/19	19/20	20/21	21/22	22/23	23/24	24/25	
Pursuit-related	22	27	19	11	16	17	13	12	19	9	6	12	24	17	21	19	15	27	18	22	17	363
Emergency response related	6	4	3	2	6	3	3	2	2	0	0	2	0	7	5	3	1	3	2	1	5	60
Other	15	11	13	5	11	6	8	5	2	2	7	6	4	3	7	2	4	3	6	6	3	129
Total INCIDENTS	43	42	35	18	33	26	24	19	23	11	13	20	28	27	33	24	20	33	26	29	25	552

Table 1.3 Type of road traffic fatality, 2004/05 to 2024/25

RTI type	Fatalities																					Total fatalities
	04/05	05/06	06/07	07/08	08/09	09/10	10/11	11/12	12/13	13/14	14/15	15/16	16/17	17/18	18/19	19/20	20/21	21/22	22/23	23/24	24/25	
Pursuit-related	23	32	19	17	22	19	13	12	27	10	7	13	28	17	30	19	20	34	20	24	18	424
Emergency response related	6	4	3	2	6	3	4	2	2	0	0	2	0	8	5	3	1	3	2	1	5	62
Other	15	12	14	5	12	7	9	5	2	2	7	6	4	4	7	2	4	3	6	7	3	136
Total FATALITIES	44	48	36	24	40	29	26	19	31	12	14	21	32	29	42	24	25	40	28	32	26	622

Road traffic incidents - fatalities

Table 1.4 Gender by financial year, 2004/05 to 2024/25

Gender	Financial year																					Total fatalities
	04/05	05/06	06/07	07/08	08/09	09/10	10/11	11/12	12/13	13/14	14/15	15/16	16/17	17/18	18/19	19/20	20/21	21/22	22/23	23/24	24/25	
Male	35	40	26	17	34	23	23	19	25	12	13	21	24	20	27	20	21	34	22	26	20	502
Female	9	8	10	7	6	6	3	0	6	0	1	0	8	9	15	4	4	6	6	6	6	120
Total fatalities	44	48	36	24	40	29	26	19	31	12	14	21	32	29	42	24	25	40	28	32	26	622

Table 1.5 Age group by financial year, 2004/05 to 2024/25

Age group	Financial year																				Total fatalities	
	04/05	05/06	06/07	07/08	08/09	09/10	10/11	11/12	12/13	13/14	14/15	15/16	16/17	17/18	18/19	19/20	20/21	21/22	22/23	23/24		24/25
Under 18	5	6	7	1	7	5	3	3	4	0	3	0	6	2	1	3	5	3	0	7	4	75
18 - 20	9	10	5	7	4	4	7	4	3	0	3	2	3	1	10	4	5	4	6	4	5	100
21 - 30	14	16	12	4	16	5	6	5	13	6	4	7	12	9	12	9	8	18	13	8	5	202
31 - 40	4	7	5	4	4	1	4	1	9	2	2	5	3	3	6	2	3	6	3	5	2	81
41 - 50	7	5	4	1	2	7	3	3	0	1	1	3	3	3	2	0	3	1	4	2	2	57
51 - 60	2	0	1	1	3	2	0	0	1	1	0	3	1	1	3	1	0	3	1	2	4	30
61 & over	3	4	2	6	4	5	3	3	1	2	1	1	4	10	8	5	1	5	1	4	4	77
Total fatalities	44	48	36	24	40	29	26	19	31	12	14	21	32	29	42	24	25	40	28	32	26	622

Table 1.6 Ethnicity by financial year, 2004/05 to 2024/25

Ethnic group	Financial year																				Total fatalities	
	04/05	05/06	06/07	07/08	08/09	09/10	10/11	11/12	12/13	13/14	14/15	15/16*	16/17	17/18	18/19	19/20	20/21	21/22	22/23	23/24		24/25
White	38	42	31	17	38	22	19	13	22	10	10	15	21	25	31	16	18	28	22	23	17	478
Asian*	3	3	2	1	0	2	4	1	4	0	3	3	3	3	9	1	3	4	5	4	5	63
Black	1	2	3	4	2	4	3	2	4	0	0	2	2	1	1	4	2	6	0	3	3	49
Mixed	1	1	0	0	0	0	0	1	0	0	1	1	2	0	1	0	0	1	0	0	1	10
Other^	1	0	0	1	0	0	0	0	1	0	0	0	4	0	0	0	0	0	1	2	0	10
Not known / Not stated	0	0	0	1	0	1	0	2	0	2	0	0	0	0	0	3	2	1	0	0	0	12
Total fatalities	44	48	36	24	40	29	26	19	31	12	14	21	32	29	42	24	25	40	28	32	26	622

*Following changes to ethnicity classification by the Office for National Statistics, since 2015/16 the Asian ethnic group now includes Chinese. This was previously recorded under the 'Other' ethnic group. Data recorded for previous years, maintains the old classification where Chinese is included in the 'Other' ethnic group.

^Prior to 2015/16, this ethnic group included 'Chinese'.

Road traffic incidents



A single incident can result in more than one death. The tables below show the number of incidents and number of fatalities these resulted in.

Table 1.7 Number of INCIDENTS by appropriate authority and financial year, 2004/05 to 2024/25

Appropriate authority	Financial year																						Total INCIDENTS
	04/05	05/06	06/07	07/08	08/09	09/10	10/11	11/12	12/13	13/14	14/15	15/16	16/17	17/18	18/19	19/20	20/21	21/22	22/23	23/24	24/25		
Avon & Somerset	0	1	0	1	1	1	0	0	1	0	0	0	0	0	0	2	0	2	1	0	1	11	
Bedfordshire	2	0	1	0	0	0	1	0	0	0	0	0	1	0	0	0	0	0	0	0	1	6	
Cambridgeshire	1	0	1	0	0	0	1	0	0	0	0	0	0	0	1	0	0	0	0	0	4		
Cheshire	0	0	0	0	3	1	1	0	0	0	0	0	0	1	1	1	1	1	0	0	10		
City of London	0	0	0	0	0	0	0	0	1	0	0	0	0	0	0	0	0	0	0	0	1		
Cleveland	2	0	0	0	1	0	0	0	0	0	0	0	1	0	0	0	0	1	0	0	5		
Cumbria	0	2	0	0	0	0	0	0	0	0	1	0	0	0	0	0	0	1	1	0	6		
Derbyshire	1	0	0	0	1	1	0	0	0	0	0	0	0	3	2	0	0	0	0	1	9		
Devon & Cornwall	0	0	1	2	0	0	0	1	1	0	0	0	0	0	0	0	1	0	0	1	7		
Dorset	0	3	1	0	0	0	1	1	0	0	0	1	0	0	1	0	0	0	0	1	9		
Durham	0	0	0	0	1	0	0	0	1	0	1	0	0	0	0	1	0	0	1	0	5		
Dyfed-Powys	0	2	0	0	2	1	0	1	0	0	0	0	0	0	0	0	0	0	0	0	6		
Essex	2	1	0	0	0	0	0	0	0	0	0	0	1	0	1	0	0	1	1	1	8		
Gloucestershire	0	0	0	0	0	0	0	0	0	0	0	0	3	0	0	0	0	0	0	0	3		
Greater Manchester	4	2	6	2	4	1	1	1	2	0	1	2	2	0	1	5	2	6	3	3	2	50	
Gwent	1	0	0	1	0	0	0	0	0	0	0	0	0	0	0	0	0	0	0	0	2		
Hampshire	1	1	1	0	1	0	0	0	0	0	0	0	0	0	1	1	0	0	0	1	7		
Hertfordshire	0	1	1	1	0	0	1	1	1	0	0	0	0	0	1	1	0	0	0	1	9		
Humberside	1	0	1	2	0	0	0	1	0	1	0	0	0	0	0	0	0	2	1	0	9		
Kent	0	2	1	1	0	1	0	0	1	0	0	2	0	1	2	1	1	0	1	0	15		
Lancashire	3	2	1	0	0	0	0	0	0	2	0	2	1	3	1	0	0	1	1	0	17		
Leicestershire	1	0	0	0	0	2	0	0	0	0	1	1	0	0	1	0	0	0	1	1	8		
Lincolnshire	2	0	0	0	0	0	2	0	0	0	0	1	0	0	0	0	0	1	0	0	6		
Merseyside	1	3	1	0	2	0	2	0	0	0	0	2	1	2	1	1	0	1	1	0	18		
Metropolitan	5	5	5	4	5	8	3	2	3	2	1	3	4	5	5	7	4	3	2	6	5	87	
Norfolk	0	0	0	0	1	1	1	0	0	0	0	0	1	1	1	0	0	0	1	1	8		
North Wales	1	0	0	0	0	0	0	0	0	0	0	0	0	0	0	0	1	0	0	0	3		
North Yorkshire	0	0	0	0	0	0	0	0	1	0	0	0	2*	0	0	0	0	1	0	0	5		
Northamptonshire	1	0	1	0	0	0	0	0	0	0	0	0	0	0	1	1	0	0	0	0	4		
Northumbria	2	2	2	0	1	0	0	1	0	0	0	1	0	0	1	0	0	1	1	0	13		
Nottinghamshire	2	1	0	0	0	0	0	3	0	1	0	0	0	0	0	0	1	0	1	3	12		
South Wales	0	1	0	0	2	0	0	1	1	0	1	1	0	1	2	0	0	1	1	1	14		
South Yorkshire	2	0	2	0	2	0	1	0	1	0	0	0	2	1	2	0	0	1	0	1	16		
Staffordshire	0	2	0	0	0	1	0	1	0	0	0	0	0	0	1	0	0	2	0	0	1	8	
Suffolk	0	0	0	0	0	0	0	0	0	0	0	0	0	0	0	0	0	0	0	0	2		
Surrey	0	1	0	0	1	0	0	2	2	0	0	0	0	0	0	0	0	0	1	0	7		
Sussex	2	2	1	1	0	2	0	1	0	1	0	1	1	2	0	0	0	1	1	0	16		
Thames Valley	1	0	2	1	1	1	0	1	1	1	1	0	1	2	0	0	2	3*	0	1	19		
Warwickshire	1	1	0	0	0	1	0	0	0	0	0	0	1	1	0	1	0	0	0	1	2	9	
West Mercia	1	1	0	0	1	1	1	0	0	0	1	0	2	0	1	1	2	1	0	1	14		
West Midlands	1	1	3	2	1	2	3	1	2	0	3	1	2	2	2	1	2	0	3	4**	3	39	
West Yorkshire	2	5	3	0	2	1	4	0	2	3	1	1	2	3	2	1	2	2	3	0	2	41	
Wiltshire	0	0	0	0	0	0	0	0	1	0	0	0	0	0	1	0	0	0	1	0	3		
British Transport	0	0	0	0	0	0	0	0	1	0	0	0	0	0	0	0	0	0	0	0	1		
HMRC	0	0	0	0	0	0	0	0	0	0	0	0	0	0	0	0	0	0	0	0	0		
Ministry of Defence	0	0	0	0	0	0	0	0	0	0	0	0	0	0	0	0	0	0	0	0	0		
SOCA / NCA	0	0	0	0	0	0	0	0	0	0	0	0	0	0	0	0	0	0	0	0	0		
Home Office^	0	0	0	0	0	0	0	0	0	0	0	0	0	0	0	0	0	0	0	0	0		
Total INCIDENTS	43	42	35	18	33	26	24	19	23	11	13	20	28	27	33	24	20	33	26	29	25	552	

^ This includes UKBF, UKIE and UKVI.
* For one of these incidents, Durham Police are also under investigation.
* For one of these incidents, Hampshire Constabulary are also under investigation.
** For one of these incidents, Staffordshire Police are also under investigation.
For this incident, Gwent Police are also under investigation

Road traffic fatalities

Table 1.8 Number of FATALITIES by appropriate authority and financial year, 2004/05 to 2024/25

Appropriate authority	Financial year																						Total FATALITIES
	04/05	05/06	06/07	07/08	08/09	09/10	10/11	11/12	12/13	13/14	14/15	15/16	16/17	17/18	18/19	19/20	20/21	21/22	22/23	23/24	24/25		
Avon & Somerset	0	2	0	1	1	1	0	0	2	0	0	0	0	0	0	2	0	2	1	0	1	13	
Bedfordshire	2	0	1	0	0	0	2	0	0	0	0	0	1	0	0	0	0	0	0	0	1	7	
Cambridgeshire	1	0	1	0	0	0	1	0	0	0	0	0	0	0	1	0	0	0	0	0	0	4	
Cheshire	0	0	0	0	3	1	1	0	0	0	0	0	0	1	1	1	1	0	0	0	10		
City of London	0	0	0	0	0	0	0	0	1	0	0	0	0	0	0	0	0	0	0	0	1		
Cleveland	2	0	0	0	1	0	0	0	0	0	0	0	1	0	0	0	0	1	0	0	5		
Cumbria	0	2	0	0	0	0	0	0	0	0	1	0	0	0	0	0	0	1	1	0	1		
Derbyshire	1	0	0	0	1	2	0	0	0	0	0	0	0	3	2	0	0	0	0	1	10		
Devon & Cornwall	0	0	2	2	0	0	0	1	3	0	0	0	0	0	0	0	1	0	0	1	0		
Dorset	0	3	1	0	0	0	1	1	0	0	0	1	0	0	1	0	0	0	0	1	9		
Durham	0	0	0	0	1	0	0	0	1	0	1	0	0	0	0	1	0	0	1	0	5		
Dyfed-Powys	0	2	0	0	2	1	0	1	0	0	0	0	0	0	0	0	0	0	0	0	6		
Essex	2	1	0	0	0	0	0	0	0	0	0	0	2	0	1	0	0	1	1	1	9		
Gloucestershire	0	0	0	0	0	0	0	0	0	0	0	0	3	0	0	0	0	0	0	0	3		
Greater Manchester	4	2	6	2	6	1	1	1	4	0	1	2	4	0	1	5	3	8	3	3	2	59	
Gwent	1	0	0	5	0	0	0	0	0	0	0	0	0	0	0	0	0	0	0	0	6		
Hampshire	1	1	1	0	2	0	0	0	0	0	0	0	0	0	0	1	1	0	0	0	1		
Hertfordshire	0	1	1	1	0	0	1	1	2	0	0	0	0	0	1	1	0	0	0	2	11		
Humberside	1	0	1	3	0	0	0	1	0	1	0	0	0	0	0	0	0	5	1	0	13		
Kent	0	2	1	1	0	1	0	0	1	0	0	2	0	1	3	1	1	0	1	0	1		
Lancashire	3	2	1	0	0	0	0	0	0	2	0	2	1	4	1	0	0	1	1	0	18		
Leicestershire	1	0	0	0	0	2	0	0	0	0	1	2	0	0	1	0	0	0	1	1	9		
Lincolnshire	2	0	0	0	0	0	2	0	0	0	0	1	0	0	0	0	0	1	0	0	6		
Merseyside	1	3	1	0	2	0	2	0	0	0	0	2	1	2	1	1	0	1	1	0	18		
Metropolitan	5	5	5	5	6	8	3	2	4	2	1	3	5	5	7	7	4	3	2	6	5	93	
Norfolk	0	0	0	0	1	1	1	0	0	0	0	0	1	1	1	0	0	0	1	1	8		
North Wales	1	0	0	0	0	0	0	0	0	0	0	0	0	0	0	0	1	0	0	1	3		
North Yorkshire	0	0	0	0	0	0	0	0	1	0	0	0	2*	0	0	0	0	1	0	0	5		
Northamptonshire	1	0	1	0	0	0	0	0	0	0	0	0	0	0	1	1	0	0	0	0	4		
Northumbria	2	2	2	0	1	0	0	1	0	0	0	1	0	0	1	0	0	2	1	0	1		
Nottinghamshire	2	1	0	0	0	0	0	3	0	1	0	0	0	0	0	0	1	0	1	3	12		
South Wales	0	1	0	0	2	0	0	1	1	0	2	1	0	1	2	0	0	1	1	2	1#		
South Yorkshire	2	0	2	0	2	0	1	0	0	0	0	2	1	0	5	0	0	1	0	1	19		
Staffordshire	0	2	0	0	2	1	0	1	0	0	0	0	0	0	1	0	0	3	0	0	1		
Suffolk	0	0	0	0	0	0	1	0	0	0	0	1	0	0	0	0	0	0	0	0	2		
Surrey	0	1	0	0	1	0	0	2	2	0	0	0	0	0	0	0	0	0	1	0	7		
Sussex	2	6	1	1	0	2	0	1	0	1	0	1	1	2	0	0	0	1	1	0	20		
Thames Valley	1	0	2	1	1	2	0	1	1	2	1	0	1	3	0	0	2	3*	0	1	22		
Warwickshire	2	1	0	0	0	1	0	0	0	0	0	1	1	0	1	0	0	0	0	1	2		
West Mercia	1	1	0	0	1	1	2	0	0	0	1	0	2	0	1	1	2	1	0	2	16		
West Midlands	1	1	3	2	1	2	3	1	2	0	3	1	2	2	2	1	5	0	3	4**	43		
West Yorkshire	2	6	3	0	5	2	4	0	3	3	1	1	2	3	5	1	3	2	5	0	2	53	
Wiltshire	0	0	0	0	0	0	0	0	1	0	0	0	0	0	1	0	0	0	0	1	3		
British Transport	0	0	0	0	0	0	0	0	1	0	0	0	0	0	0	0	0	0	0	0	1		
HMRC	0	0	0	0	0	0	0	0	0	0	0	0	0	0	0	0	0	0	0	0	0		
Ministry of Defence	0	0	0	0	0	0	0	0	0	0	0	0	0	0	0	0	0	0	0	0	0		
SOCA / NCA	0	0	0	0	0	0	0	0	0	0	0	0	0	0	0	0	0	0	0	0	0		
Home Office^	0	0	0	0	0	0	0	0	0	0	0	0	0	0	0	0	0	0	0	0	0		
Total FATALITIES	44	48	36	24	40	29	26	19	31	12	14	21	32	29	42	24	25	40	28	32	26	622	

Fatal shootings

Definition:

This includes fatalities where police officers fired the fatal shot using a conventional firearm.

Table 2.1 Number of fatalities and incidents by financial year, 2004/05 to 2024/25

Financial year	Number of fatalities	Number of incidents
2004/05	3	3
2005/06	5	5
2006/07	1	1
2007/08	5	4
2008/09	3	3
2009/10	2	2
2010/11	2	2
2011/12	2	2
2012/13	0	0
2013/14	0	0
2014/15	1	1
2015/16	3	3
2016/17	6	6
2017/18	4	2
2018/19	3	3
2019/20	3	3
2020/21	1	1
2021/22	2	2
2022/23	3	3
2023/24	2	2
2024/25	2	2
Total	53	50

Table 2.2 Gender by financial year, 2004/05 to 2024/25

	Financial year																					Total fatalities
Gender	04/05	05/06	06/07	07/08	08/09	09/10	10/11	11/12	12/13	13/14	14/15	15/16	16/17	17/18	18/19	19/20	20/21	21/22	22/23	23/24	24/25	
Male	3	5	1	4	3	2	2	2	0	0	1	3	6	4	3	3	1	2	3	2	2	52
Female	0	0	0	1	0	0	0	0	0	0	0	0	0	0	0	0	0	0	0	0	0	1
Total fatalities	3	5	1	5	3	2	2	2	0	0	1	3	6	4	3	3	1	2	3	2	2	53

Fatal shootings

Table 2.3 Age group by financial year, 2004/05 to 2024/25

	Financial year																					Total fatalities
Age group	04/05	05/06	06/07	07/08	08/09	09/10	10/11	11/12	12/13	13/14	14/15	15/16	16/17	17/18	18/19	19/20	20/21	21/22	22/23	23/24	24/25	
Under 18	0	0	0	0	0	0	0	0	0	0	0	0	0	0	0	0	0	0	0	0	0	0
18 - 20	0	0	0	0	0	0	0	0	0	0	0	0	0	0	0	1	0	0	0	0	0	1
21 - 30	2	2	0	0	0	0	0	1	0	0	0	1	3	4	0	2	0	2	1	1	1	20
31 - 40	0	1	0	4	3	0	0	1	0	0	1	0	2	0	2	0	0	0	2	1	1	18
41 - 50	0	2	1	0	0	1	2	0	0	0	0	2	0	0	0	0	0	0	0	0	0	8
51 - 60	1	0	0	1	0	0	0	0	0	0	0	0	1	0	1	0	1	0	0	0	0	5
61 & over	0	0	0	0	0	1	0	0	0	0	0	0	0	0	0	0	0	0	0	0	0	1
Total fatalities	3	5	1	5	3	2	2	2	0	0	1	3	6	4	3	3	1	2	3	2	2	53

Table 2.4 Ethnicity by financial year, 2004/05 to 2024/25

Ethnic group	Financial year																				Total fatalities	
	04/05	05/06	06/07	07/08	08/09	09/10	10/11	11/12	12/13	13/14	14/15	15/16*	16/17	17/18	18/19	19/20	20/21	21/22	22/23	23/24		24/25
White	3	3	1	2	3	2	2	1	0	0	0	2	4	1	2	0	1	0	2	2	1	32
Asian*	0	0	0	0	0	0	0	0	0	0	0	0	1	2	0	2	0	0	0	0	0	5
Black	0	1	0	3	0	0	0	1	0	0	1	0	0	0	1	1	0	1	1	0	1	11
Mixed	0	0	0	0	0	0	0	0	0	0	0	1	1	1	0	0	0	0	0	0	0	3
Other^	0	1	0	0	0	0	0	0	0	0	0	0	0	0	0	0	0	0	0	0	0	1
Not known / not stated	0	0	0	0	0	0	0	0	0	0	0	0	0	0	0	0	0	1	0	0	0	1
Total fatalities	3	5	1	5	3	2	2	2	0	0	1	3	6	4	3	3	1	2	3	2	2	53

*Following changes to ethnicity classification by the Office for National Statistics, since 2015/16 the Asian ethnic group now includes Chinese. This was previously recorded under the 'Other' ethnic group. Data recorded for previous years, maintains the old classification where Chinese is included in the 'Other' ethnic group.

^Prior to 2015/16, this ethnic group included 'Chinese'.

Fatal shootings

Only forces that recorded a fatal police shooting are listed below

Table 2.5 Number of FATALITIES by appropriate authority and financial year, 2004/05 to 2024/25

Appropriate authority	Financial year																					Total FATALITIES
	04/05	05/06	06/07	07/08	08/09	09/10	10/11	11/12	12/13	13/14	14/15	15/16	16/17	17/18	18/19	19/20	20/21	21/22	22/23	23/24	24/25	
Avon & Somerset	0	0	0	0	0	0	0	0	0	0	0	0	0	1	0	0	0	0	0	0	0	1
Bedfordshire	0	0	0	0	0	0	0	0	0	0	0	0	1	0	0	0	0	0	0	0	0	1
Cambridgeshire	0	0	0	0	0	0	0	0	0	0	0	1	0	0	0	0	0	0	0	0	0	1
City of London	0	0	0	0	0	0	0	0	0	0	0	0	0	3^	0	2**	0	0	0	0	0	5^**
Cumbria	0	0	0	0	0	0	0	0	0	0	0	0	0	0	0	0	0	0	1	0	0	1
Derbyshire	0	0	0	0	0	0	0	0	0	0	0	0	0	0	0	0	0	0	1	0	0	1
Devon & Cornwall	1	0	0	0	0	0	0	0	0	0	0	0	0	0	0	0	0	0	0	0	0	1
Durham	0	0	0	0	0	1	0	0	0	0	0	0	0	0	0	0	0	0	0	0	0	1
Greater Manchester	0	1	0	0	0	0	0	1	0	0	0	0	0	0	0	0	0	0	0	0	0	2
Humberside	1	0	0	0	0	0	0	0	0	0	0	0	1	0	0	0	0	0	0	0	0	2
Kent	0	0	0	2	0	0	0	0	0	0	0	0	1	0	0	0	0	0	0	0	0	3
Metropolitan	1	2	1	3*	2	0	0	1	0	0	1	2	1	3^	1	2**	0	1	1	2	0	24^**
Northumbria	0	1	0	0	0	0	0	0	0	0	0	0	1	0	0	0	0	0	0	0	0	2
Staffordshire	0	1	0	0	0	0	0	0	0	0	0	0	0	0	0	0	0	0	0	0	0	1
Surrey	0	0	0	0	1	0	0	0	0	0	0	0	0	0	0	0	0	0	0	0	1	2
Sussex	0	0	0	0	0	1	1	0	0	0	0	0	0	0	0	0	0	0	0	0	0	2
Thames Valley	0	0	0	0	0	0	0	0	0	0	0	0	0	0	0	0	0	1	0	0	0	1
West Mercia	0	0	0	0	0	0	0	0	0	0			0	0	0	0	0	0	0	0	1	1
West Midlands	0	0	0	0	0	0	0	0	0	0	0	0	0	0	2	0	0	0	0	0	0	2
West Yorkshire	0	0	0	0	0	0	1	0	0	0	0	0	1	0	0	0	0	0	0	0	0	2
Wiltshire	0	0	0	0	0	0	0	0	0	0	0	0	0	0	0	0	1	0	0	0	0	1
Total FATALITIES	3	5	1	5	3	2	2	2	0	0	1	3	6	4	3	3	1	2	3	2	2	53

* One incident resulted in two fatalities

[^] Officers from City of London and Metropolitan Police were involved in one incident that resulted in three fatalities.

^{**} One fatality resulted from an incident involving officers from the City of London and Metropolitan Police

Deaths in or following police custody

Definition:

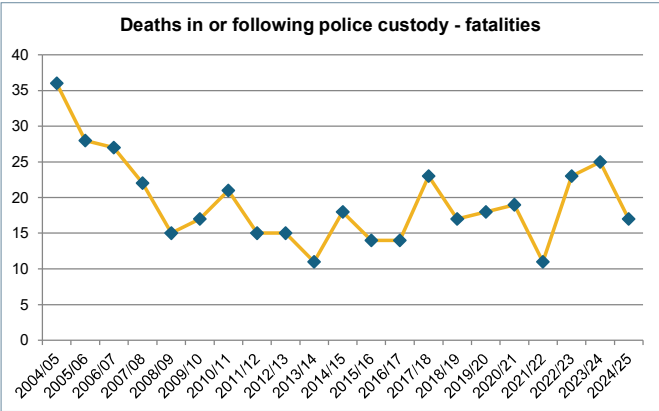
This **includes** deaths that occur while a person is being arrested or taken into detention. It includes deaths of persons who have been arrested or have been detained by police under the Mental Health Act 1983. The death may have taken place on police, private or medical premises, in a public place or in a police or other vehicle.

For example:

- Deaths that occur during or following police custody where injuries that contributed to the death were sustained during the period of detention.
- Deaths that occur in or on the way to hospital (or other medical premises) following or during transfer from scene of arrest or police custody.
- Deaths that occur as a result of injuries or other medical problems that are identified or that develop while a person is in custody.

Table 3.1 Number of fatalities and incidents by financial year, 2004/05 to 2024/25

Financial year	Number of fatalities	Number of incidents
2004/05	36	36
2005/06	28	28
2006/07	27	27
2007/08	22	22
2008/09	15	15
2009/10	17	17
2010/11	21	21
2011/12	15	15
2012/13	15	15
2013/14	11	11
2014/15	18	18
2015/16	14	14
2016/17	14	14
2017/18	23	23
2018/19	17	17
2019/20	18	18
2020/21	19	19
2021/22	11	11
2022/23	23	23
2023/24	25 ~	25 ~
2024/25	17	17
Total	406	406



~ This table presents the most up-to-date set of figures; any updates to previously published data are indicated.

Table 3.2 Gender by financial year, 2004/05 to 2024/25

Gender	Financial year																					Total fatalities
	04/05	05/06	06/07	07/08	08/09	09/10	10/11	11/12	12/13	13/14	14/15	15/16	16/17	17/18	18/19	19/20	20/21	21/22	22/23	23/24	24/25	
Male	31	22	23	21	13	16	19	13	14	11	15	12	12	21	15	17	17	9	22	23~	14	360
Female	5	6	4	1	2	1	2	2	1	0	3	2	2	2	2	1	2	2	1	2	3	46
Total fatalities	36	28	27	22	15	17	21	15	15	11	18	14	14	23	17	18	19	11	23	25~	17	406

~ This table presents the most up-to-date set of figures; any updates to previously published data are indicated.

Deaths in or following police custody

Table 3.3 Age group by financial year, 2004/05 to 2024/25

Age group	Financial year																					Total fatalities
	04/05	05/06	06/07	07/08	08/09	09/10	10/11	11/12	12/13	13/14	14/15	15/16	16/17	17/18	18/19	19/20	20/21	21/22	22/23	23/24	24/25	
Under 18	0	0	0	0	0	0	0	0	0	0	0	0	0	0	0	0	0	0	0	0	1	1
18 - 20	1	0	1	1	0	1	1	0	2	0	0	0	1	0	0	1	0	0	1	0	0	10
21 - 30	7	4	4	3	2	1	2	4	1	0	4	5	3	5	2	5	3	1	5	4	2	67
31 - 40	6	7	2	6	4	3	8	5	4	5	6	3	3	6	7	6	6	4	9	9	5	114
41 - 50	12	13	9	7	8	5	7	1	6	3	6	3	4	7	3	1	7	4	2	6	5	119
51 - 60	4	4	6	2	1	3	2	5	1	2	2	2	3	3	3	3	2	2	5	5	0	60
61 & over	6	0	5	2	0	4	1	0	1	1	0	1	0	2	2	1	1	0	1	1~	4	33
Not known	0	0	0	1	0	0	0	0	0	0	0	0	0	0	0	1	0	0	0	0	0	2
Total fatalities	36	28	27	22	15	17	21	15	15	11	18	14	14	23	17	18	19	11	23	25~	17	406

~ This table presents the most up-to-date set of figures; any updates to previously published data are indicated.

Table 3.4 Ethnicity by financial year, 2004/05 to 2024/25

Ethnic group	Financial year																					Total fatalities
	04/05	05/06	06/07	07/08	08/09	09/10	10/11	11/12	12/13	13/14	14/15	15/16*	16/17	17/18	18/19	19/20	20/21	21/22	22/23	23/24	24/25	
White	34	23	22	19	10	16	20	13	14	10	16	10	11	16	16	14	17	10	19	22~	15	347
Asian	0	2	2	0	2	0	0	0	0	0	1	3	0	0	0	0	0	0	1	0	0	11
Black	2	1	3	1	3	0	1	1	0	0	1	1	2	6	1	3	2	1	2	1	2	34
Mixed	0	2	0	1	0	1	0	1	1	1	0	0	1	0	0	0	0	0	1	1	0	10
Other^	0	0	0	1	0	0	0	0	0	0	0	0	0	1	0	0	0	0	0	1	0	3
Not known	0	0	0	0	0	0	0	0	0	0	0	0	0	0	0	1	0	0	0	0	0	1
Total fatalities	36	28	27	22	15	17	21	15	15	11	18	14	14	23	17	18	19	11	23	25~	17	406

*Following changes to ethnicity classification by the Office for National Statistics, since 2015/16 the Asian ethnic group now includes Chinese. This was previously recorded under the 'Other' ethnic group. Data recorded for previous years, maintains the old classification where Chinese is included in the 'Other' ethnic group.

^Prior to 2015/16, this ethnic group included 'Chinese'.

~ This table presents the most up-to-date set of figures; any updates to previously published data are indicated.

Table 3.5 Number of FATALITIES by appropriate authority and financial year, 2004/05 to 2024/25

Appropriate authority	Financial year																					Total FATALITIES
	04/05	05/06	06/07	07/08	08/09	09/10	10/11	11/12	12/13	13/14	14/15	15/16	16/17	17/18	18/19	19/20	20/21	21/22	22/23	23/24	24/25	
Avon & Somerset	4	1	0	0	1	0	1	0	0	0	1	0	0	0	0	0	0	0	1	0	1	10
Bedfordshire	0	0	1	0	0	0	0	0	0	1	0	1	0	0	0	0	0	0	0	0	0	3
Cambridgeshire	0	0	0	0	0	2	0	0	0	0	0	0	0	0	0	0	1	0	1	0	0	4
Cheshire	1	0	0	2	1	1	0	3	0	2	0	2	0	1	0	0	0	1	0	1	0	15
City of London	0	0	0	0	0	0	0	0	0	0	0	0	0	0	0	0	0	0	0	0	0	0
Cleveland	1	0	0	1	0	0	0	1	0	0	0	0	0	0	0	1	0	0	2	1	0	7
Cumbria	0	0	0	0	0	0	0	0	1	0	0	0	0	0	0	0	0	0	0	0	0	1
Derbyshire	2	1	2	0	1	0	0	0	0	1	0	1	1	1	0	0	2	0	0	0	0	12
Devon & Cornwall	1	3	0	0	0	0	0	0	3	0	0	1	1	1	0	0	3	0	0	2	0	15
Dorset	1	0	0	0	0	1	0	0	0	0	0	0	0	0	0	0	0	0	0	0	0	2
Durham	0	0	0	0	0	0	0	1	0	0	0	0	0	0	0	1	0	0	0	0	0	2
Dyfed-Powys	0	0	1	0	0	0	0	1	0	0	1	0	0	0	0	1	0	0	0	0	1	5
Essex	0	3	1	0	0	0	1	0	2	0	1	0	0	1	0	0	1	0	2	0	1	13
Gloucestershire	1	0	0	0	0	0	0	0	0	0	0	0	1	0	0	0	0	0	0	0	0	2
Greater Manchester	3	2	2	3	1	1	1	0	1	0	0	0	0	1	2	3	0	2	1	3	0	26
Gwent	0	0	1	0	1	0	1	0	0	0	1	0	0	0	1	0	0	0	1	0	0	6
Hampshire	0	0	0	1	0	0	0	0	0	0	1	0	0	1	1	1	1	1	1	1	0	9
Hertfordshire	1	0	0	0	0	0	0	0	0	0	0	0	0	1	0	0	0	1	1	0	0	4
Humberside	0	0	0	0	0	0	0	1	0	1	0	0	0	0	0	0	0	0	0	0	0	2
Kent	1	1	1	1	0	1	1	0	0	1	1	0	0	1	0	0	0	1	0	0	1	11
Lancashire	0	1	1	2	0	1	2	1	0	0	0	0	1	0	0	0	0	0	1	0	0	10
Leicestershire	0	0	0	0	0	0	0	0	1	0	0	0	0	0	0	0	1	0	0	1	0	3
Lincolnshire	1	0	1	1	0	1	0	0	0	0	1	0	0	0	1	0	0	1	1	0	0	8
Merseyside	1	0	0	1	1	1	1	0	0	0	0	0	1	1	0	0	1	0	1	3	2	14
Metropolitan	5	6	4	5	7	1	3	2	1	0	2	5	3	4	2	3	2	2	2	6~	2	67
Norfolk	1	0	1	0	0	0	0	0	1	0	0	0	0	0	1	0	2	0	1	0	0	7
North Wales	0	1	1	0	0	1	1	0	2	0	0	0	0	0	1	0	0	0	0	0	1	8
North Yorkshire	0	0	0	0	0	0	1	1	0	0	0	0	0	1	0	1	0	0	0	0	0	4
Northamptonshire	0	0	0	0	0	0	0	0	0	0	0	0	0	0	1	0	0	0	0	0	0	1
Northumbria	1	1	1	1	0	0	1	0	2	0	2	1	2	0	2	0	0	0	2	1	0	17
Nottinghamshire	0	0	1	0	0	1	0	0	0	0	0	0	0	3	0	1	0	0	1	0	1	8
South Wales	4	0	3	1	0	1	0	1	0	0	0	0	0	0	0	1	1	0	1	1	0	14
South Yorkshire	2	2	0	0	0	0	1	0	0	1	0	0	0	0	1	0	2	0	0	0	0	9
Staffordshire	0	1	0	0	0	0	0	1	1	1	1	0	0	0	2	0	0	0	0	1	1	9
Suffolk	0	1	1	0	0	0	0	1	0	0	0	1	1	0	0	1	0	1	0	1	0	8
Surrey	0	0	0	1	0	0	0	0	0	2	0	1	0	0	0	0	0	0	0	0	1	5
Sussex	0	2	0	0	0	0	1	0	0	0	1	0	0	1	0	1	0	0	1	0	0	7
Thames Valley	1	1	0	0	0	2	1	0	0	1	0	0	0	2	0	1	2	1	0	0	0	12
Warwickshire	1	0	0	0	1	1	0	0	0	0	1	0	0	1	1	0	0	0	0	0	1*	7
West Mercia	0	0	0	1	0	0	1	1	0	0	0	0	1	0	0	0	0	0	0	0	0	4
West Midlands	0	1	2	0	0	0	2	0	0	0	1	1	1	1	0	1	0	0	1	3	0	14
West Yorkshire	3	0	2	0	1	0	0	0	0	0	3	0	1	1	1	0	0	0	1	0	2	15
Wiltshire	0	0	0	0	0	0	0	0	0	0	0	0	0	0	0	0	0	0	0	0	1	1
British Transport	0	0	0	0	0	0	0	0	0	0	0	0	0	0	0	1	0	0	0	0	0	1
HMRC	0	0	0	1	0	0	0	0	0	0	0	0	0	0	0	0	0	0	0	0	0	1
Ministry of Defence	0	0	0	0	0	0	0	0	0	0	0	0	0	0	0	0	0	0	0	0	0	0
SOCA / NCA	0	0	0	0	0	0	0	0	0	0	0	0	0	0	0	0	0	0	0	0	0	0
Home Office^	0	0	0	0	0	1	0	0	1	0	0	0	0	0	0	0	0	0	0	0	1	3
Total FATALITIES	36	28	27	22	15	17	21	15	15	11	18	14	14	23	17	18	19	11	23	25~	17	406

^This includes UKBF, UKIE and UKVI
* For this fatality, Leicestershire Police are also under investigation
~ This table presents the most up-to-date set of figures; any updates to previously published data are indicated.

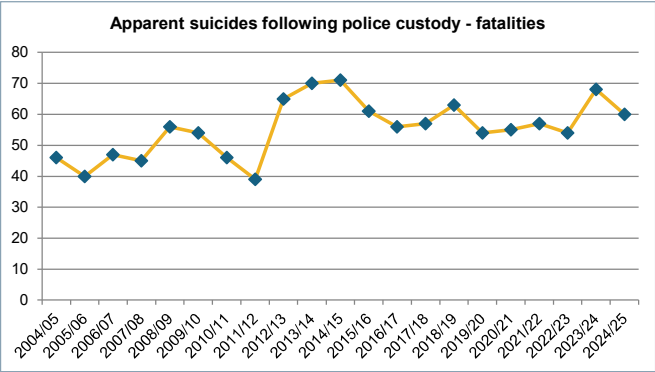
Apparent suicides following police custody

Definition:

This includes apparent suicides that occur within two days of release from police custody. It also includes apparent suicides that occur beyond two days of release from custody, where the period spent in custody may be relevant to the subsequent death.

Table 4.1 Number of fatalities and incidents by financial year, 2004/05 to 2024/25

Financial year	Number of fatalities	Number of incidents
2004/05	46	46
2005/06	40	40
2006/07	47	47
2007/08	45	45
2008/09	56	56
2009/10	54	54
2010/11	46	46
2011/12	39	39
2012/13	65	65
2013/14	70	70
2014/15	71	71
2015/16	61	61
2016/17	56	56
2017/18	57	57
2018/19	63	63
2019/20	54	54
2020/21	55	55
2021/22	57	57
2022/23	54	54
2023/24	68	68
2024/25	60	60
Total	1164	1164



Operational advice note issued in 2007 on the referral of apparent suicides following release from custody

Table 4.2 Gender by financial year, 2004/05 to 2024/25

Gender	Financial year																					Total fatalities
	04/05	05/06	06/07	07/08	08/09	09/10	10/11	11/12	12/13	13/14	14/15	15/16	16/17	17/18	18/19	19/20	20/21	21/22	22/23	23/24	24/25	
Male	45	39	43	42	48	49	42	34	58	64	63	57	54	55	55	49	50	56	51	60	56	1070
Female	1	1	4	3	8	5	4	5	7	6	8	4	2	2	8	5	5	1	3	8	4	94
Total fatalities	46	40	47	45	56	54	46	39	65	70	71	61	56	57	63	54	55	57	54	68	60	1164

Apparent suicides following police custody

Table 4.3 Age group by financial year, 2004/05 to 2024/25

Age group	Financial year																					Total fatalities
	04/05	05/06	06/07	07/08	08/09	09/10	10/11	11/12	12/13	13/14	14/15	15/16	16/17	17/18	18/19	19/20	20/21	21/22	22/23	23/24	24/25	
Under 18	0	1	0	2	0	0	0	0	1	1	0	1	1	0	1	0	0	0	0	0	1	9
18 - 20	3	0	2	4	1	2	1	2	2	3	1	0	1	3	4	5	3	1	3	3	1	45
21 - 30	5	7	7	7	16	9	9	4	8	16	18	9	8	10	13	8	11	11	9	7	14	206
31 - 40	17	11	19	13	19	13	15	13	13	15	18	15	13	15	11	13	14	17	17	19	12	312
41 - 50	12	12	7	13	8	20	11	10	21	20	20	21	16	20	16	14	15	12	6	17	13	304
51 - 60	5	7	6	3	8	7	6	8	16	12	9	9	12	6	13	12	8	12	14	18	10	201
61 & over	4	2	6	3	4	2	4	2	3	3	5	6	5	3	5	2	4	4	5	4	9	85
Not known	0	0	0	0	0	1	0	0	1	0	0	0	0	0	0	0	0	0	0	0	0	2
Total fatalities	46	40	47	45	56	54	46	39	65	70	71	61	56	57	63	54	55	57	54	68	60	1164

Table 4.4 Ethnicity by financial year, 2004/05 to 2024/25

Ethnic group	Financial year																					Total fatalities
	04/05	05/06	06/07	07/08	08/09	09/10	10/11	11/12	12/13	13/14	14/15	15/16*	16/17	17/18	18/19	19/20	20/21	21/22	22/23	23/24	24/25	
White	43	32	41	40	51	46	41	36	58	67	63	59	46	47	59	48	51	53	50	62	57	1050
Asian	1	2	1	4	1	1	1	2	3	1	4	2	4	3	1	1	0	1	2	3	2	40
Black	2	0	1	1	0	2	2	1	1	2	3	0	3	6	2	3	2	1	1	2	0	35
Mixed	0	0	0	0	1	0	1	0	1	0	1	0	1	1	1	1	2	2	1	0	1	14
Other^	0	0	0	0	0	0	0	0	1	0	0	0	2	0	0	0	0	0	0	1	0	4
Not known / stated	0	6	4	0	3	5	1	0	1	0	0	0	0	0	0	1	0	0	0	0	0	21
Total fatalities	46	40	47	45	56	54	46	39	65	70	71	61	56	57	63	54	55	57	54	68	60	1164

*Following changes to ethnicity classification by the Office for National Statistics, since 2015/16 the Asian ethnic group now includes Chinese. This was previously recorded under the 'Other' ethnic group. Data recorded for previous years, maintains the old classification where Chinese is included in the 'Other' ethnic group.

^Prior to 2015/16, this ethnic group included 'Chinese'.

Table 4.5 Number of FATALITIES by appropriate authority and financial year, 2004/05 to 2024/25

Appropriate authority	Financial year																					Total FATALITIES
	04/05	05/06	06/07	07/08	08/09	09/10	10/11	11/12	12/13	13/14	14/15	15/16	16/17	17/18	18/19	19/20	20/21	21/22	22/23	23/24	24/25	
Avon & Somerset	1	0	5	2	1	2	0	0	2	1	2	2	0	0	2	1	0	0	1	3	1	26
Bedfordshire	0	0	1	0	2	1	0	1	2	0	1	1	0	2	2	1	2	2"	1	0	0	19
Cambridgeshire	0	0	0	2	0	2	1	1	0	1	0	0	0	2	0	1	1	0	0	3	1	15
Cheshire	0	1	0	0	0	0	0	0	3	1	1	1	0	2	1	1	2	0	0	3	1	17
City of London	1	0	0	0	0	0	0	0	1	0	0	0	0	0	0	0	0	0	0	0	0	2
Cleveland	0	0	1	1	1	0	0	0	1	0	1	3	2	2	1	2	2	2	2	0	0	21
Cumbria	4	1	0	1	1	1	1	2	2	2	2	1	0	0	0	0	2	0	1	1	0	22
Derbyshire	1	0	0	1	0	1	0	0	1	1	1	0	2	0	0	0	1	2	3	0	1	15
Devon & Cornwall	2	1	0	0	1	0	4	2	2	2	4	2	2	1	3	2	2	5	4	6	4	49
Dorset	2	0	1	0	3	1	1	0	1	1	0	0	0	0	1	0	0	0	0	0	2	13
Durham	1	1	2	0	0	1	4	2	0	0	0	2	1	2	1	0	0	0	0	0	0	17
Dyfed-Powys	3	2	2	0	0	1	2	1	1	0	0	1	0	1	0	1	1	0	1	1	1	19
Essex	0	1	1	1	0	1	0	0	2	3	1	0	3	1	0	2	0	2	3#	0	0	21
Gloucestershire	1	1	1	0	1	0	0	0	0	0	1	1	2	1	0	0	0	0	1	0	3	13
Greater Manchester	2	1	2	4	1	4	0	1	4	3	3	0	1	0	5	1	2	1	0	1	1	37
Gwent	2	1	0	0	0	1	1	0	1	0	1	1	0	0	0	1	1	2	0	1	1	14
Hampshire	0	0	2	0	3	3	6	0	4	1	1	1	3	4	2	1	2	0	4	2	3	42
Hertfordshire	1	1	1	0	0	1	0	0	2	3	0	0	2*	3	2	2	0	0	1	1	0	20
Humberside	0	0	0	2	2	1	0	0	1	0	2	2	0	0	2	2	0	0	1	3	1	19
Kent	0	0	0	0	2	1	1	1	2	4	3	2	0	1	1	2	2	3	3	5	1	34
Lancashire	0	3	3	2	3	1	3	1	0	5	3	1	3	0	1	2	0	2	0	3	2	38
Leicestershire	1	0	1	1	2	0	0	1	1	0	1	0	1	1	0	1	2	3	0	0	0	16
Lincolnshire	0	0	1	1	1	0	2	0	1	0	1	0	3	0	2	1	1	2	0	0	2	18
Merseyside	0	0	1	1	0	0	0	1	1	1	2	3	1	1	4	0	1	0	0	0	1	18
Metropolitan	0	0	1	3	5	10	7	0	8	8	5	4	4	6	2	3	6	4	3	4	2	85
Norfolk	1	1	0	0	1	0	0	0	1	0	1	2	0	0	0	0	1	1	1	1	1	13
North Wales	2	0	1	1	1	0	0	1	2	2	0	1	1	1	0	0	0	0	0	3	2	18
North Yorkshire	1	1	1	1	0	1	0	0	5	2	2	1	0	2	3	0	0	1	2	1	1	25
Northamptonshire	0	0	2	1	3	0	0	1	0	2	0	3	2	0	0	1	0	0	1	2	3	21
Northumbria	2	2	1	2	3	4	1	4	1	1	4	1	0	1	0	4	1	2	5	3	2	44
Nottinghamshire	1	1	1	1	0	1	0	2	1	1	1	3	0	3	1	0	1	1	0	0	0	19
South Wales	3	0	0	2	2	1	4	1	1	4	3	3	0	3	0	1	0	2	0	0	2	32
South Yorkshire	2	2	3	1	0	0	0	1	1	2	0	1	1	2	4	2	0	1	3	2	2	30
Staffordshire	1	1	0	1	4	1	0	4	2	1	2	2	2	1	1	4	0	4	3	0	0	34
Suffolk	2	1	2	1	0	0	0	0	0	1	0	2	2	0	0	2	1	0	1	1	4	20
Surrey	0	2	1	1	2	1	1	2	0	1	3	1	1	1	2	1	3	0	1	0	2	26
Sussex	1	0	3	2	3	1	0	1	1	4	4	3	2	3	1	3	2	3	1	6	4	48
Thames Valley	0	1	1	2	1	4	2	1	1	3	2	1	3	3	3	3	4	1	0	1	1	38
Warwickshire	0	3	1	0	0	3	0	0	0	0	0	2	0	0	1	1	1	0	0	1	0	13
West Mercia	1	5	1	1	1	0	2	2	3	1	2	2	3	1	3	0	0	3	2	2	1	36
West Midlands	0	4	1	4	1	4	1	3	0	3	3	2	4	3	4	2	0	0	1	4	4	48
West Yorkshire	5	1	1	1	5	0	1	0	3	1	3	2	3	2	2	3	5	4	3	4	1	50
Wiltshire	1	0	1	0	1	0	0	0	0	2	1	2	0	0	0	0	3	2	0	0	2	15
British Transport	0	1	0	0	0	0	1	1	1	1	1	0	0	1	5**	0	3***	1	0	0	0	16
HMRC	0	0	0	1	0	0	0	0	0	0	0	0	1	0	0	0	0	0	0	0	0	2
Ministry of Defence	1	0	0	0	0	0	0	0	0	0	0	0	0	0	0	0	0	0	0	0	0	1
SOCA / NCA	0	0	0	0	0	0	0	0	0	0	1	0	1	1	0	0	0	1	1	0	0	5
Home Office^	0	0	0	0	0	0	0	0	0	0	0	0	0	0	0	0	0	0	0	0	0	0
Total FATALITIES	46	40	47	45	56	54	46	39	65	70	71	61	56	57	63	54	55	57	54	68	60	1164

^aThis includes UKBF, UKIE and UKVI.

* For one of these fatalities, the NCA are also under investigation.

** For one of these fatalities, Avon and Somerset are also under investigation. A further two of these fatalities involved other forces; Derbyshire and Staffordshire.

*** One of these fatalities also involved Nottinghamshire

^ This fatality also involved Thames Valley Police

One of these fatalities also involved Hertfordshire

Other deaths following police contact



Definition:

This includes deaths that follow contact with the police, either directly or indirectly, that did not involve arrest or detention under the Mental Health Act 1983 and were **subject to an independent investigation**. An independent investigation is determined by the IOPC for the most serious incidents that cause the greatest level of public concern, have the greatest potential to impact on communities or have serious implications for the reputation of the police service. The criteria to include only deaths subject to an independent investigation have been applied **since 2010/11** to improve consistency in the reporting of these deaths.

- For example:**
- Deaths that occur after the police are called to attend a domestic incident that results in a fatality.
 - Deaths that occur after the police have been contacted following concerns about a person's welfare and there is concern about the nature of the police response.
 - Deaths that occur where the police are called to assist medical staff to restrain individuals who are not under arrest.

Table 5.1 Number of fatalities and incidents by financial year, 2004/05 to 2024/25

Financial year	Number of fatalities	Number of incidents
2004/05	24	23
2005/06	40	38
2006/07	22	21
2007/08	31	30
2008/09	35	33
2009/10	39	37
2010/11*	57	49
2011/12	47	37
2012/13	22	20
2013/14	44	41
2014/15	43	43
2015/16**	106	103
2016/17	131	128
2017/18	178	172
2018/19	156	151
2019/20	107	104
2020/21	97	96
2021/22	113~	106~
2022/23	91	86
2023/24	62~	60~
2024/25	50	48
Total	1495	1426

*Change in definition in 2010/11 to include only cases subject to an independent investigation.
**Expansion of IOPC investigative resource and capacity to carry out more independent investigations into serious and sensitive matters - this has a direct impact on the number of 'other contact deaths' that are reported.
~ This table presents the most up-to-date set of figures; any updates to previously published data are indicated.

Table 5.2 Gender by financial year, 2004/05 to 2024/25

	Financial year																					Total
Gender	04/05	05/06	06/07	07/08	08/09	09/10	10/11*	11/12	12/13	13/14	14/15	15/16**	16/17	17/18	18/19	19/20	20/21	21/22	22/23	23/24	24/25	fatalities
Male	17	28	19	21	24	25	41	22	12	18	36	75	92	117	109	74	56	79	59	39	33	996
Female	7	12	3	10	11	14	16	25	10	26	7	31	39	61	47	33	41	34~	32	23~	17	499
Total fatalities	24	40	22	31	35	39	57	47	22	44	43	106	131	178	156	107	97	113~	91	62~	50	1495

*Change in definition in 2010/11 to include only cases subject to an independent investigation.
**Expansion of IOPC investigative resource and capacity to carry out more independent investigations into serious and sensitive matters - this has a direct impact on the number of 'other contact deaths' that are reported.
~ This table presents the most up-to-date set of figures; any updates to previously published data are indicated.

Other deaths following police contact

Table 5.3 Age group by financial year, 2004/05 to 2024/25

	Financial year																					Total fatalities
Age group	04/05	05/06	06/07	07/08	08/09	09/10	10/11*	11/12	12/13	13/14	14/15	15/16**	16/17	17/18	18/19	19/20	20/21	21/22	22/23	23/24	24/25	
Under 18	1	2	0	1	4	5	8	4	3	6	3	5	5	6	7	6	9	6	6	2	3	92
18 - 20	1	0	1	2	3	1	1	2	3	1	1	5	4	10	7	1	2	2	1	1	2	51
21 - 30	6	6	6	5	7	7	12	7	4	14	7	18	21	38	23	19	19	28	21	7	8	283
31 - 40	5	10	4	9	9	10	10	12	5	7	8	24	28	28	31	30	16	23~	17	22~	15	323
41 - 50	4	6	6	8	7	10	9	12	2	8	15	23	37	40	35	25	28	29~	20	11	11	346
51 - 60	3	8	4	2	0	4	9	5	1	6	3	16	16	34	29	15	15	17	18	10	8	223
61 & over	4	4	1	2	2	1	7	5	4	2	6	14	20	18	23	11	7	8	8	8~	3	158
Not known	0	4	0	2	3	1	1	0	0	0	0	1	0	4	1	0	1	0	0	1~	0	19
Total fatalities	24	40	22	31	35	39	57	47	22	44	43	106	131	178	156	107	97	113~	91	62~	50	1495

*Change in definition in 2010/11 to include only cases subject to an independent investigation.
**Expansion of IOPC investigative resource and capacity to carry out more independent investigations into serious and sensitive matters - this has a direct impact on the number of 'other contact deaths' that are reported.
~ This table presents the most up-to-date set of figures; any updates to previously published data are indicated.

Table 5.4 Ethnicity by financial year, 2004/05 to 2024/25

Ethnic group	Financial year																				Total fatalities	
	04/05	05/06	06/07	07/08	08/09	09/10	10/11*	11/12	12/13	13/14	14/15	15/16" **	16/17	17/18	18/19	19/20	20/21	21/22	22/23	23/24		24/25
White	22	34	14	28	24	31	42	37	19	32	35	84	113	154	137	89	78	93	76	45~	43	1230
Asian	0	1	4	1	3	3	1	2	1	8	2	11	7	9	4	7	4	6~	5	5	5	89
Black	1	3	3	0	4	3	8	3	1	3	5	8	9	5	7	6	11	7~	4	11	2	104
Mixed	0	1	0	2	1	0	2	0	0	1	1	1	1	2	2	0	0	2	3	0	0	19
Other^	1	0	0	0	2	0	3	4	1	0	0	2	1	1	3	1	0	1	1	0	0	21
Not known / stated	0	1	1	0	1	2	1	1	0	0	0	0	0	7	3	4	4	4	2	1~	0	32
Total fatalities	24	40	22	31	35	39	57	47	22	44	43	106	131	178	156	107	97	113~	91	62~	50	1495

" Following changes to ethnicity classification by the Office for National Statistics, since 2015/16 the Asian ethnic group now includes Chinese. This was previously recorded under the 'Other' ethnic group. Data recorded for previous years, maintains the old classification where Chinese is included in the 'Other' ethnic group.

^ Prior to 2015/16, this ethnic group included 'Chinese'.

**Expansion of IOPC investigative resource and capacity to carry out more independent investigations into serious and sensitive matters - this has a direct impact on the number of 'other contact deaths' that are reported.

~ This table presents the most up-to-date set of figures; any updates to previously published data are indicated.

Other deaths following police contact

One incident can result in more than one fatality, the tables below have been separated to show the number of fatalities and the number of incidents.

Table 5.5 Number of INCIDENTS by appropriate authority and financial year, 2004/05 to 2024/25

Appropriate authority	Financial year																								Total INCIDENTS
	04/05	05/06	06/07	07/08	08/09	09/10	10/11*	11/12	12/13	13/14	14/15	15/16**	16/17	17/18	18/19	19/20	20/21	21/22	22/23	23/24	24/25				
Avon & Somerset	0	0	0	0	0	3	2	1	0	3	1	2	1	1	6	1	2	7	3	4	1	38			
Bedfordshire	0	0	1	1	1	0	1	0	0	1	0	0	1	3	0	1	1	1	0	0	0	13			
Cambridgeshire	0	0	0	2	1	1	0	0	1	0	0	2	2	1	2	1	1	0	0	0	0	14			
Cheshire	1	0	0	1	1	0	0	0	0	0	1	0	4	3	2	3	1	1	0	0	0	18			
City of London	0	0	0	0	0	0	0	0	0	0	0	0	1*	0	0	0	0	0	0	0	0	1			
Cleveland	0	0	1	0	0	0	1	0	1	0	1	1	0	2	1	0	0	5	1	0	0	14			
Cumbria	0	0	0	0	0	0	0	0	0	0	0	0	1	1	2	0	1	0	2	0	0	7			
Derbyshire	0	0	0	0	0	1	3	0	0	0	1	1	0	1	1	5	0	3	1	1	0	18			
Devon & Cornwall	0	1	0	0	1	2	0	1	2	3	3	3	2	9	8	4	3	5	3	0	1	51			
Dorset	2	2	0	0	0	1	0	0	0	0	0	3	1	5	2	1	0	1	1	0	1	20			
Durham	0	0	0	1	0	1	1	2	0	0	1	1	3	3	0	0	0	1	2	0	0	16			
Dyfed-Powys	1	0	0	0	0	2	0	0	0	0	1	0	1	1	3	0	0	1	0	0	0	10			
Essex	0	1	1	2	1	0	0	2	1	1	3	1	1	8	4	3	3	1	0	1	2	36			
Gloucestershire	0	1	0	0	2	1	0	0	0	2	0	0	1	3	1	1	0	4	2	1	0	19			
Greater Manchester	0	3	0	1	2	3	1	2	2	5	1	9	9	15	12	10	7	14	12	6	2	116			
Gwent	0	0	1	0	0	2	1	3	1	1	1	1	0	1	1	1	1	1	0	1	1	18			
Hampshire	0	1	2	2	2	2	0	1	2	0	0	1	2	2	4	2	1	1	1	5~	2	33			
Hertfordshire	0	0	0	1	0	2	0	1	0	0	1	1	3	4	0	0	3	0	0	0	1	17			
Humberside	0	0	1	0	1	1	0	1	0	1	1	1	1	2	1	2	1	1	3	2	1	21			
Kent	0	0	0	2	0	0	0	0	0	3	0	3	4	6	9	0	3	1	1	1	1	34			
Lancashire	1	1	1	3	0	1	1	0	0	0	2	4	2	3	4	1	4	2	2	1	3	36			
Leicestershire	0	1	0	1	1	0	2	0	0	1	0	1	4	2	3	2	0	1	2	2	1	24			
Lincolnshire	2	2	0	0	0	1	2	0	1	0	0	1	2	1	0	2	3	1	1	1	0	20			
Merseyside	0	1	0	1	1	1	1	2	0	0	1	1	4	6	4	1	3	5	2	4	3	41			
Metropolitan	3	5	4	2	4	2	8	5	1	6	4	19	10	13	16	18	17	14~	9	8~	4	172			
Norfolk	1	1	0	0	1	0	0	0	0	0	1	2	1	2	3	2	0	1	0	2	2	19			
North Wales	0	2	0	0	0	1	2	1	0	0	0	2	4	2	0	1	1	1	0	0	0	17			
North Yorkshire	0	0	0	0	0	0	0	0	0	0	0	2	2	2	1	2	3	1	3	0	3	19			
Northamptonshire	1	2	0	1	1	0	1	3	0	0	1	2	1	3	2	1	0	2	6	2	1	30			
Northumbria	1	0	0	0	0	0	1	1	0	0	3	2	10	3	2	0	2	1	2	0	0	28			
Nottinghamshire	1	0	0	0	1	0	2	0	1	0	0	2	3	1	2	1	0	1	2	1	1	19			
South Wales	0	3	1	0	0	0	3	0	1	1	3	5	7	7	2	5	3	5	2	0	2	50			
South Yorkshire	0	1	2	1	2	0	2	0	1	0	0	2	2	2	7	3	3	0	1	1	2	32			
Staffordshire	0	4	1	1	0	0	2	1	0	0	0	2	6	4	3	4	2	0	2	3	2	37			
Suffolk	1	0	1	0	0	3	2	0	0	0	1	2	0	0	1	1	1	0	1	2	0	16			
Surrey	1	0	0	0	0	0	0	1	0	1	0	1	2	1	2	3	1	1	0	0	2	16			
Sussex	0	0	1	2	2	1	1	1	1	3	0	3	4	4	5	3	2	1	1	1	2	38			
Thames Valley	0	0	0	1	1	1	0	2	0	1	3	4	7	3	6	2	1	1	0	1	0	34			
Warwickshire	1	0	0	0	1	0	0	0	1	0	1	0	0	2	2	0	1	0	2	1	0	12			
West Mercia	1	0	1	1	1	0	0	0	0	1	1	0	2	3	1	2	2	0	5	0	0	21			
West Midlands	2	1	1	0	2	2	5	3	1	3	3	7	8	18	9	4	8	9	6	1	1	94			
West Yorkshire	3	3	1	3	0	2	2	2	2	3	3	4	6	10	8	6	5	4~	2	2	2	73			
Wiltshire	0	2	0	0	1	0	2	0	0	1	0	4	3	2	2	1	1	1	0	0	1	21			
British Transport & Greater Manchester & Lancashire	0	0	0	0	0	0	0	0	0	0	0	0	0	0	0	1	0	0	0	0	0	1			
British Transport & Metropolitan	0	0	0	0	0	0	0	0	0	0	0	0	0	0	0	0	1	0	0	1	0	2			
Cleveland & Cheshire	0	0	0	0	0	0	0	0	0	0	0	0	0	1	0	0	0	0	0	0	0	1			
Cumbria & Avon and Somerset & Devon and Cornwall	0	0	0	0	0	0	0	0	0	0	0	0	0	0	0	0	0	1	0	0	0	1			
Essex & Suffolk	0	0	0	0	0	0	0	0	0	0	0	0	0	0	0	0	0	0	0	0	1	1			
Gwent & South Wales	0	0	0	0	0	0	0	0	0	0	0	0	0	0	0	0	0	0	1	0	0	1			
Greater Manchester & Cheshire	0	0	0	0	0	0	0	0	0	0	0	0	0	0	0	1	0	0	0	0	0	1			
Greater Manchester Police & Lancashire Constabulary	0	0	0	0	0	0	0	0	0	0	0	0	0	0	0	0	0	0	0	2	0	2			
Greater Manchester Police & South Wales Police & Gwent Police	0	0	0	0	0	0	0	0	0	0	0	0	0	0	0	0	0	0	0	1	0	1			
Hampshire & Dorset	0	0	0	0	0	0	0	0	0	0	0	0	0	0	0	1	0	0	0	0	0	1			
Humberside & Lincolnshire	0	0	0	0	0	0	0	0	0	0	0	0	0	1	0	0	0	0	0	0	0	1			
Lancashire & Cumbria	0	0	0	0	0	0	0	0	0	0	0	0	0	0	0	0	0	1	0	0	0	1			
Lancashire & Merseyside	0	0	0	0	0	0	0	0	0	0	0	0	0	1	0	0	0	0	0	0	0	1			
Lancashire & Merseyside & Cumbria	0	0	0	0	0	0	0	0	0	0	0	0	0	0	0	0	0	1	0	0	0	1			
Leicestershire & Derbyshire	0	0	0	0	0	0	0	0	0	0	0	0	0	1	0	0	0	0	0	0	0	1			
Metropolitan & Thames Valley	0	0	0	0	0	0	0	0	0	0	0	0	0	0	0	0	1	0	0	0	0	1			
Northamptonshire & Derbyshire	0	0	0	0	0	0	0	0	0	0	0	0	0	0	0	0	0	0	1	0	0	1			
Northumbria & Metropolitan	0	0	0	0	0	0	0	0	0	0	0	0	0	0	0	0	1	0	0	0	0	1			
North Yorkshire & West Yorkshire	0	0	0	0	0	0	0	0	0	0	0	0	0	0	1	0	0	0	0	0	0	1			
South Wales & Devon and Cornwall	0	0	0	0	0	0	0	0	0	0	0	0	0	0	1	0	0	0	0	0	0	1			
South Wales & Staffordshire	0	0	0	0	0	0	0	0	0	0	0	0	0	0	0	0	0	1	0	0	0	1			
South Yorkshire & Essex	0	0	0	0	0	0	0	0	0	0	0	0	0	0	1	0	0	0	0	0	0	1			
Surrey & Metropolitan	0	0	0	0	0	0	0	0	0	0	0	0	0	0	1	0	1	0	0	0	0	2			
Surrey & Sussex	0	0	0	0	0	0	0	0	0	0	0	0	0	0	1	0	0	0	0	0	0	1			
Thames Valley & West Midlands	0	0	0	0	0	0	0	0	0	0	0	0	0	0	0	0	1	0	0	0	0	1			
Warwickshire & Dorset	0	0	0	0	0	0	0	0	0	0	0	0	0	0	0	0	0	1	0	0	0	1			
West Midlands & South Wales	0	0	0	0	0	0	0	0	0																

Other deaths following police contact

Table 5.6 Number of FATALITIES by appropriate authority and financial year, 2004/05 to 2024/25

Appropriate authority	Financial year																							Total FATALITIES
	04/05	05/06	06/07	07/08	08/09	09/10	10/11*	11/12	12/13	13/14	14/15	15/16**	16/17	17/18	18/19	19/20	20/21	21/22	22/23	23/24	24/25			
Avon & Somerset	0	0	0	0	0	3	2	1	0	3	1	3	1	1	6	2	2	8	3	4	1	41		
Bedfordshire	0	0	1	1	1	0	1	0	0	1	0	0	1	3	0	1	1	1	1	0	0	13		
Cambridgeshire	0	0	0	2	1	1	0	0	1	0	0	2	2	1	2	1	1	0	0	0	0	14		
Cheshire	1	0	0	1	1	0	0	0	0	0	1	0	4	3	2	3	1	2	0	0	0	19		
City of London	0	0	0	0	0	0	0	0	0	0	0	0	1*	0	0	0	0	0	0	0	0	1		
Cleveland	0	0	1	0	0	0	1	0	1	0	1	1	0	2	1	0	0	5	1	0	0	14		
Cumbria	0	0	0	0	0	0	0	0	0	0	0	0	1	1	2	0	1	0	3	0	0	8		
Derbyshire	0	0	0	0	0	1	6	0	0	0	1	1	0	1	1	6	0	4	1	1	0	23		
Devon & Cornwall	0	1	0	0	1	2	0	1	2	3	3	3	2	9	8	4	3	6	3	0	1	52		
Dorset	2	2	0	0	0	1	0	0	0	0	0	3	1	5	2	1	0	2	1	0	1	21		
Durham	0	0	0	1	0	1	1	5	0	0	0	1	1	3	3	0	0	1	2	0	0	19		
Dyfed-Powys	1	0	0	0	0	2	0	0	0	0	1	0	1	1	3	0	0	1	0	0	0	10		
Essex	0	1	1	2	1	0	0	3	1	1	3	1	1	9	5	3	3	1	0	1	2	39		
Gloucestershire	0	1	0	0	2	1	0	0	0	2	0	0	1	3	1	1	0	4	2	1	0	19		
Greater Manchester	0	4	0	1	3	3	1	4	2	5	1	9	9	18	12	11	7	14	12	6	2	124		
Gwent	0	0	1	0	0	2	1	3	3	1	1	1	0	1	1	1	1	1	0	1	1	20		
Hampshire	0	1	2	2	2	2	0	1	2	0	0	1	2	2	4	2	1	1	1	5	2	33		
Hertfordshire	0	0	0	1	0	3	0	1	0	0	1	1	5	4	0	0	3	0	0	0	1	20		
Humberside	0	0	1	0	1	1	0	1	0	1	1	1	1	3	1	2	1	1	4	2	1	23		
Kent	0	0	0	2	0	0	0	0	0	3	0	3	4	6	9	0	3	1	2	2	1	36		
Lancashire	1	1	1	3	0	1	1	0	0	0	2	4	2	3	4	1	4	2	2	1	3	36		
Leicestershire	0	1	0	2	1	0	5	0	0	1	0	1	4	2	3	2	0	1	2	2	1	28		
Lincolnshire	2	2	0	0	0	1	2	0	1	0	0	1	2	1	0	2	3	1	1	2	0	21		
Merseyside	0	1	0	1	1	1	1	2	0	0	1	1	4	6	4	1	3	5	2	4	3	41		
Metropolitan	3	5	5	2	4	2	8	6	1	7	4	21	10	13	16	18	18	15~	9	8~	4	179		
Norfolk	1	1	0	0	1	0	0	0	0	0	1	2	1	2	3	2	0	1	0	2	2	19		
North Wales	0	2	0	0	0	1	2	1	0	0	0	2	4	2	0	1	1	1	0	0	0	17		
North Yorkshire	0	0	0	0	0	0	0	0	0	0	0	2	2	2	2	1	2	3	1	3	0	19		
Northamptonshire	1	2	0	1	1	0	1	6	0	0	1	2	1	3	2	1	0	2	6	2	1	33		
Northumbria	1	0	0	0	0	0	2	1	0	0	3	2	10	3	3	0	2	1	2	0	0	30		
Nottinghamshire	2	0	0	0	1	0	2	0	1	0	0	2	3	1	2	1	0	1	2	1	1	20		
South Wales	0	3	1	0	0	0	3	0	1	0	1	3	5	7	7	2	5	3	5	2	0	3	51	
South Yorkshire	0	1	2	1	2	0	2	0	1	1	0	0	2	2	2	7	3	0	1	1	2	32		
Staffordshire	0	4	1	1	0	0	2	1	0	0	0	2	6	4	3	4	2	0	2	3	2	37		
Suffolk	1	0	1	0	0	3	3	0	0	0	1	2	0	0	1	1	1	0	1	2	0	17		
Surrey	1	0	0	0	0	0	0	1	0	2	0	1	2	1	2	3	1	1	0	0	2	17		
Sussex	0	0	1	2	2	2	1	1	1	3	0	3	4	5	5	3	2	1	1	1	2	40		
Thames Valley	0	0	0	1	1	1	0	2	0	1	3	4	7	3	8	2	1	1	0	1	0	36		
Warwickshire	1	0	0	0	1	1	0	0	0	1	0	1	0	0	2	2	0	1	0	2	1	0	12	
West Mercia	1	0	1	1	1	0	0	0	0	1	1	0	2	3	1	2	2	0	5	0	0	21		
West Midlands	2	1	1	0	3	2	5	3	1	4	3	7	9	18	10	4	8	9	6	1	2	99		
West Yorkshire	3	3	1	3	0	2	2	2	2	3	3	4	6	10	8	6	5	4~	2	2	2	73		
Wiltshire	0	3	0	0	1	0	2	0	0	1	0	4	3	2	2	1	1	1	0	0	1	22		
British Transport & Greater Manchester & Lancashire	0	0	0	0	0	0	0	0	0	0	0	0	0	0	0	1	0	0	0	0	0	1		
British Transport & Metropolitan	0	0	0	0	0	0	0	0	0	0	0	0	0	0	0	0	1	0	0	1	0	2		
Cleveland & Cheshire	0	0	0	0	0	0	0	0	0	0	0	0	0	1	0	0	0	0	0	0	0	1		
Cumbria & Avon and Somerset & Devon and Cornwall	0	0	0	0	0	0	0	0	0	0	0	0	0	0	0	0	0	1	0	0	0	1		
Essex & Suffolk																		0	0	0	1	1		
Greater Manchester & Cheshire	0	0	0	0	0	0	0	0	0	0	0	0	0	0	0	1	0	0	0	0	0	1		
Greater Manchester Police & Lancashire Constabulary	0	0	0	0	0	0	0	0	0	0	0	0	0	0	0	0	0	0	0	2	0	2		
Greater Manchester Police & South Wales Police & Gwent Police	0	0	0	0	0	0	0	0	0	0	0	0	0	0	0	0	0	0	0	1	0	1		
Gwent & South Wales	0	0	0	0	0	0	0	0	0	0	0	0	0	0	0	0	0	0	3	0	0	3		
Hampshire & Dorset	0	0	0	0	0	0	0	0	0	0	0	0	0	0	0	1	0	0	0	0	0	1		
Humberside & Lincolnshire	0	0	0	0	0	0	0	0	0	0	0	0	0	1	0	0	0	0	0	0	0	1		
Lancashire & Cumbria	0	0	0	0	0	0	0	0	0	0	0	0	0	0	0	0	0	1	0	0	0	1		
Lancashire & Merseyside	0	0	0	0	0	0	0	0	0	0	0	0	0	1	0	0	0	0	0	0	0	1		
Lancashire & Merseyside & Cumbria	0	0	0	0	0	0	0	0	0	0	0	0	0	0	0	0	0	1	0	0	0	1		
Leicestershire & Derbyshire	0	0	0	0	0	0	0	0	0	0	0	0	0	1	0	0	0	0	0	0	0	1		
Metropolitan & Thames Valley	0	0	0	0	0	0	0	0	0	0	0	0	0	0	0	0	1	0	0	0	0	1		
Northamptonshire & Derbyshire	0	0	0	0	0	0	0	0	0	0	0	0	0	0	0	0	0	0	1	0	0	1		
Northumbria & Metropolitan	0	0	0	0	0	0	0	0	0	0	0	0	0	0	0	0	1	0	0	0	0	1		
North Yorkshire & West Yorkshire	0	0	0	0	0	0	0	0	0	0	0	0	0	0	1	0	0	0	0	0	0	1		
South Wales & Devon and Cornwall	0	0	0	0	0	0	0	0	0	0	0	0	0	0	1	0	0	0	0	0	0	1		
South Wales & Staffordshire																								
South Yorkshire & Essex	0	0	0	0	0	0	0	0	0	0	0	0	0	0	1	0	0	0	0	0	0	1		
Surrey & Metropolitan	0	0	0	0	0	0	0	0	0	0	0	0	0	0	1	0	1	0	0	0	0	2		
Surrey & Sussex	0	0	0	0	0	0	0	0	0	0	0	0	0	0	1	0	0	0	0	0	0	1		
Thames Valley & West Midlands	0	0	0	0	0	0	0	0	0	0	0	0	0	0	0	0	1	0	0	0	0	1		
Warwickshire & Dorset	0	0	0	0	0	0	0	0	0	0	0	0	0	0	0	0	0	2	0	0	0	2		
West Midlands & Wales	0	0	0	0	0	0	0	0	0	0	0	0	0	0	0	1	0	0	0	0	0	1		
West Midlands & Warkwickshire	0	0	0	0	0	0	0	0	0	0	0	0	0	1	0	0	0	1	0	0	0	2		
West Mercia & Staffordshire	0	0	0	0	0	0	0	0	0	0	0	0	0	1	1	0	0	0	0	0	0	2		
West Mercia & West Midlands	0	0	0	0	0	0	0	0	0	0	0	0	0	0	1	0	0	0	0	0	0	1		
West Yorkshire & Greater Manchester																				1	1			
British Transport	0	0	0	0	0	0	0	1	0	0	0	0	0	1	0	0	0	0	0	1	0	3		
HMRC	0	0	0	0	0	0	0	0	0	0	0	0	0	0	0	0	0	0	0	0	0	0		
Ministry of Defence	0	0	0	0	1	0	0	0	0	0	0	0	0	0	0	0	0	0	0	0	0	1		
SOCA	0	0	0	0	0	0	0	0	0	0	0	0	0	0	0	0	0	0	0	0	0	0		
Home Office^a	0	0	0	0	1	0	0	0	0	0	0	1	0	0	0	1	0	0	0	0	0	3		
Total FATALITIES	24	40	22	31	35	39	57	47	22	44	43	106	131	178	156	107	97	113~	91	62~	50	1495		

* Change in definition in 2010/11 to include only cases subject to an independent investigation

^aThis includes UKBF, UKIE and UKVI.

* The Metropolitan Police are also under investigation for this fatality.

**Expansion of IOPC investigative resource and capacity to carry out more independent investigations into serious and sensitive matters - this has a direct impact on the number of 'other contact deaths' that are reported.

~ This table presents the most up-to-date set of figures; any updates to previously published data are indicated.